



CATALOGUE 2015

www.truckbody.cc

CONTENTS



**REFRIGERATED
TRUCK BODY**

01



**DRY CARGO
TRUCK BODY**

02



CARAVAN

03



SHELTER

04



CONTAINER

05





Engaged in Cold Chain area for more than 20 years. **BULLEX-SCHWALL** is professional at design& manufacture full range of refrigerated truck bodies. As a Sino-Germany corporation, most of our processing technology follow the direction of Germany side scientists.



puren®
gmbh



KÖMMERLING

REFRIGERATED TRUCK BODY



Brief Introduction

Our German partner team is consist of well equipped laborary and professional engineers. They work in truck body manufacturing field for many years, focuse plenty attention on processing technology improvement and top level raw material sourcing. For GRP sheet, we co-operate with LAMILUX company, the most famours GRP manufacturer in Germany, with more than 60 years experiance in GRP producing. For Glue, we import directly from German KOMMERLING. And the PU foam adopt from the Germany brand PUREN. With advanced processing technology and machinery line, specific panels and entire truck bodies are finished in short period. Before delivery, our quality department will be in charge of strict quality testing to guarantee the products high-quality features.

To reduce freight transportation fee, we suggest clients to consider SKD(Semi Knock Down) delivery which can load most quantity panels & spare parts into marine containers. As part of after-sales service, we can send professional engineers to assist the clients fixing final assembly and direct technology training face to face.

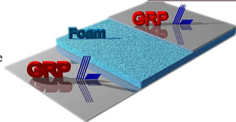


BULLEX-SCHWALL cooperate with world famous raw material suppliers. Many subjects are imported directly from Germany companies, including series or GRP Sheets, Processing & Assembly Glue, Inner PU Foams etc.



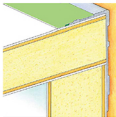
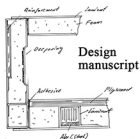
Top Level Raw Materials

- FRP Sheet +PU/XPS/Plywood+FRP Sheet
- Use proper density PU/XPS, easily to fulfill the Thermal Insulation, Moisture-proof, Fire-proofing features.



>>Assembly Technology

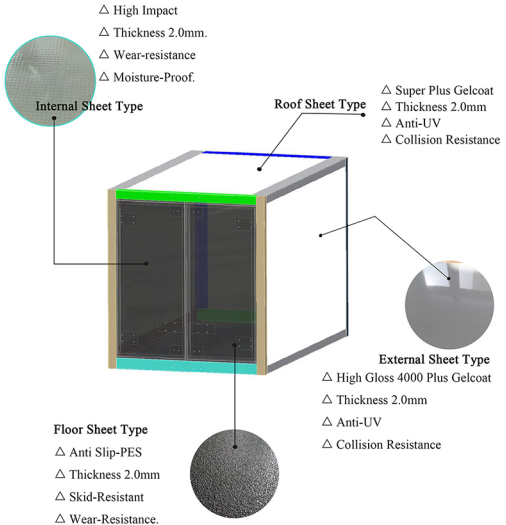
By upgrading the aluminum profiles ,we adopt “FRP Profiles +Glue” assembly technology to fix the panels joining. This improve the truck body Thermal Insulation, Fighting Intensity, Entire Aesthetics features to higher level. What’s better, this method can realize the fastest assembly working in minutes, more efficient and easier way to operate.



PANELS STRUCTURE



What's more characteristic, we use different series of FRP sheets on different panel walls:





THIS IS **NOT** A SANDWICH PANEL

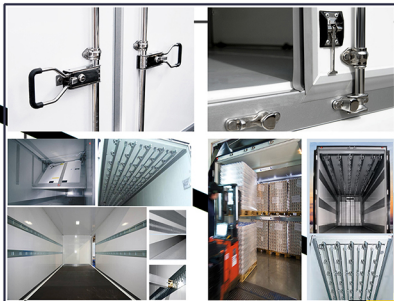
For long truck body ,Stitching Technology is adopted in panel processing . With special treatment of extra fabric thread on internal PU board ,It will realize the truck body most impact resistant .

High Technical Performances :

- Light weight structural material
- High buckling resistance
- High strength and stiffness



Series spare parts and decorations are available: Partitions, Meat Hooks, Tube Cargo Tank, SUS Locks, Skirt Board, Floor Rails etc.



SPARE PARTS



Make the most suitable



cold chain design for you !

BULLEX-SCHWALL cooperate with world famous brands suppliers :

Carrier ,Thermoking ,Hwasung etc.



The quality chiller which guarantee the regular and smooth cold dispersion and save energy.



The efficient, energy saving chiller that maintain continuing cold air.



Temperature control switch

Compressor

MITSUBISHI TD

The chilling technology ensuring good quality that can be installed with all brands and models.



UPS

Compressor



Control switch

Hot Coil



THERMO KING

The good quality chiller that fast make cold and spread cold air around the container. Suitable to all car models.



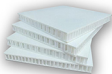
A Zanotti Group Company

REFRIGERATED UNITS



DRY CARGO TRUCK BODY

To follow the world current logistic tendency on low weight truck body requirements, Bullex-Schwall adopt newest panel materials and improve the designing technology. Decreasing the truck body weight on big percent, our products and service are well famed by customers and market.



To make the dry cargo truck body lowest weight, our products features are the following:

1. Sandwich Panel: FRP Sheet +Honeycomb Core (Aluminum / Plastic)+FRP Sheet ,efficiently deduce the entire cargo box weight and improve the impact resistance ability
- 2.Sub Frame: Aluminum / Carbon Steel
- 3.Door Frame: Aluminum / Stainless Steel



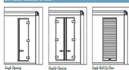


Our standard specification is available,
and customize requirements are also accept .

Doors Options



REF REFRIGERATED DOOR OPTIONS



Hydraulic
Lifting
Tailboard



Inside
Partition



Packing & Delivery





CARAVAN



**ADVOCATE OF
NEWLY ADVANCED
LIFESTYLE.**

**HELP YOU TO ACHIEVE THE
FREEDOM DREAM, PRIVILEGE OF
INDEPENDENT
TRAVEL !**





It's our honor to share your specific lifestyle, attitude towards joy ,nature and leisure:

- You don't ask for much of life, but do require a few things: self-determination, freedom of movement and the space to dream.
- You are excited to reach the destination but never forget to savour the journey.
- You love the independence and setting your own course.

Caravanning is both the destination you choose and the road you travel. Whether you are out in nature or surrounded by people, whether you are on the coast or in the mountains, whether it's for a short weekend or for several weeks, you want to experience the world up close. This is the dream that binds you. This is why BULLEX-SCHWALL makes caravans that allow you the space to be truly free.

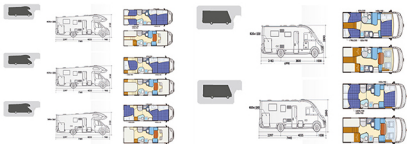




White smooth metal paneling (standard) Beige smooth metal paneling (option) Blue smooth metal paneling (option)



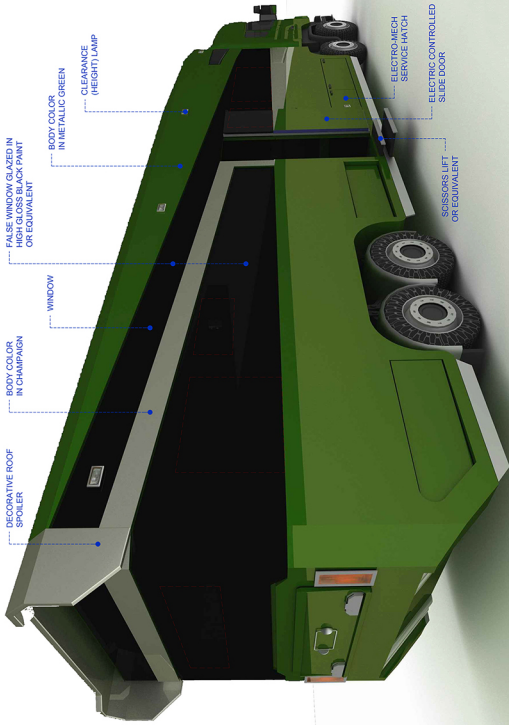
We definitely understand your private achievements and know how to fulfill.
We share your passion to enjoy life on the road with no restrictions.
We'll take you along, just hop in. Come to us and start the real private tour!

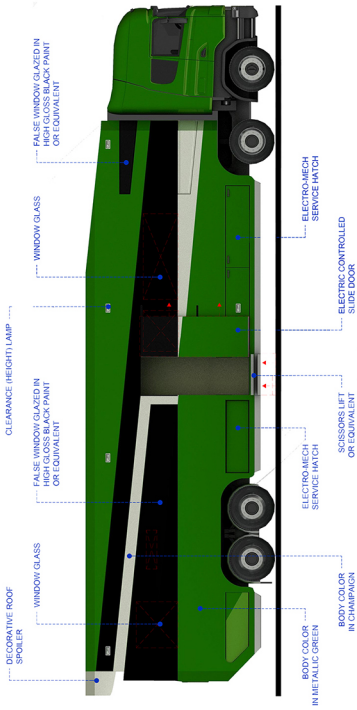




CARAVANS





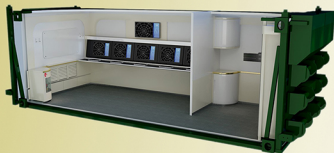


Equipment with professional devices and specific design technology, the Shelter can realize your special requirements on the most safe way , convenient movable, easy dismounting etc.

BULLEX-SCHWALL cooperate with Germany teams, adopt advanced technology, guarantee you the high-quality Shelter.



SHELTER





THE ADVANTAGES OF PREFABRICATED CONTAINER HOUSE



CONTAINER





Office || Mining camp/labor camp || Hotel or Motel || Workers' accommodation



School || Canteen || Villa || Apartment || Public toilet or shower || Clinic

They are widely used as offices and habitation buildings within a construction site. Additionally, this kind steel structure houses can also be used as industrial buildings, field working places and additional facilities of a building and so on. Star container house are suitable for long distance transportation and as a result are also suitable for export.

**WIDE APPLICATION
OF PREFABRICATED
CONTAINER HOUSE**



SPECIFICATIONS

The container is designed as a light construction consisting of floor and roof frames and corner profiles.

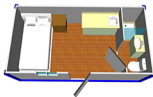
The construction enables compounding of individual containers in longitudinal and transverse directions without limits.

It also enables compounding of containers in 2 floors in height (ground floor+first floor), or in 3 floors in height for warehousing of these containers (ground floor+2 floor).

The wainscots of the container are made of light insulation panels and offer pleasant climate in the interior due to their building and physical properties.

Used materials are environmental friendly.

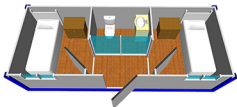
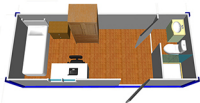
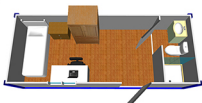
- Size and tare — (Iso standard 1161).
- external length 20/(inner length) 20: 6.055m/(5.851m).
- external width/(inner width): 2.435m/(2.231m).
- external height/inner height: 2.790m/(2.510m).
- tare: 1950 kgs.



Our standard 20 feet containers can be expanded to get larger place. In both directions, you can eliminate the wall panels and joint them together to make an combination of two or more containers together.

With the use of strong connection mechanism we can ensure the strength of combination and the Gasket will be used to prevent the building from leakage and moisture. We can assemble a building up to 3 floors high and expanded on the ground level to facilitate living and working for more people.







PROJECT CASES

This project is a road construction project campsite located in the south of Quebec in Canada, this campsite includes offices, accommodation, recreation room, toilets, showers, generating equipment, etc for 600 people using. This project is made of over-wide containers, all the materials and producing technology are demanded to meet the Canada building standards and CAS certified. We are the only manufacturer who can provide North America CSA certification in Chinese container housing field. Meanwhile we also have CSA, UL certified raw materials in storage to satisfy different customers' demands and delivery time.





PROJECT CASES

FACILITIES

Machinery

1st shot blasting:

1x 24 nozzle shot blasting machine

1x16 nozzles shot blasting machine;

4x press machines (Roof panel, side panel, corner posts)

1x Punching machine;

1x flashing machine;

4x cutting machine;

1x automatic cutting machine;

1x automatic drilling machine;



Sub Assembly

Rear & front end sub assembly jig line; (Door panels automatic welding machine)

Side & Roof panel sub assembly line (All automatic welding machine);

Base structure sub assembly jig line;



Main Assembly Line

2nd shot blasting booths;
OK station;
Painting line:
Zinc primer and interior top coating painting booth;
Oven for the interior top coating;
Exterior middle Painting booths;
Top coating painting booths;
Oven for the exterior top coating;
Floorboard installation station;
Locking device installation station;
Water tightness station;
Bitumen checking station;
Test station;



FACILITIES

Quality Management System and Product Certification

1. Bullex house has been certified by ISO 9001
2. Bullex house has been certified by CWB
3. Bullex house has total 20 quality personnel which are well trained with many year's experience
4. Product certification :CE ,CSA and AS
5. Bullex house is certified by ISO14001





Annual turnover data (construction) for the last three years

Year	Turnover	US \$ equivalent
1.	2012	10,450,000
2.	2013	8,670,000
3.	2014	15,620,000



Financial Position



Bullex-Schwall has good credits with bank, customers and suppliers. The ability of liquidity is strong enough. Financial strength in delivering the required number of containers as required in the project schedule. Financial strength is strong to commit the delivery on time.



Production Capacity

For 12' widthx9'6"x40' units, total 11 units per day;

For 8'widthx9'6"x40', total 15 units per day;

For 8'widthx9'6"x20 units, total 25 units peR DAY;

For ISO standard: 20'GP total 28 units per day;

For 40'GP/HC, total 16 units per day;

For flat pack , total 50 per day;

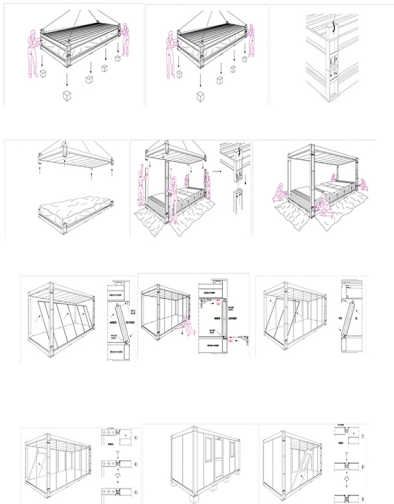


Delivery -- (Cost saving and convenient transportation.)

Standard containers can be used for various static applications and suitable for inter-modal freight in flat-pack form. Containers can be delivered assembled or individually in kits 648mm high. Each bundle of 4 collapsed units has iso standard external size with corner casting for lifting and moving containers . Units are designed as light structure comprising floor, corner posts and interchangeable wainscots to creat outside walls.

4 kits can be bundled in packages:

External dimension: 6055*2435*2791.



>> Installation

BULLEX-SCHWALL

SINO-GERMAN JOINT VENTURE

Jingsi Road, Shizhong District, Jinan, Shandong, China

Tel +86 531 86109991 Fax +86 531 86101306

<http://www.truckbody.cc>